

Wireframe deck for adding non-electrical items - key points:

- Single event pages now have a past version, where data entry occurs, that is different from upcoming event pages.
- Visual design is encouraged to explore rich colors, pleasing layouts/ typography, etc, to make the table and forms more visually appealing, as research has shown people are a bit more likely to complete visually appealing forms. Color and icons are placeholder/ suggestive only (and incomplete, of course). Please considering avoiding red and green in all of your UI as much as possible - these colors are not viewable by most color-blind (up to 7% of the population).

Single Event Page (Past Event version) - default view, desktop

restarters

Talk

Fixometer

Events

Groups

Wiki

Events:

Totnes Civic Hall, 24 Nov 2018

re

organised by

Restarters Totnes

Details:

James Pickstone, Host. "We're taking Restart on the road to be part of ShareFest Totnes, an event..."

more

Attendance:

Participants

- 32 +

Volunteers

- 6 +

attendance successfully updated

Items repaired

Environmental impact

27

21 powered items

6 unpowered items

39 kg waste prevented

the same amount of material waste as

2.5 sofas

486 kg CO² emissions prevented

(calculated from powered items only)

the same amount of emissions as watching

288 hours of TV

Not counting toward this event's environmental impact are 1 device to be recycled, 1 device to be repaired, and 1 misc or non-powered device with no weight estimate.

Items at this event (30):

Powered (23)

28

532

Unpowered (7)

13

A powered item is anything connecting to, or containing, a source of power (electrical, battery, solar, etc.)

Click row for details, to edit, or to delete. Click column head to sort by column; click again to unsort.

Add Item +

Item Category	Brand	Model / Item type	Assessment	Status	Parts Needed?
Mobile	Samsung	Galaxy 8	Dust and dirt accumulation	Fixed	No
Misc	Kenwood	Breadmaker	Doesn't heat up. Still in factory...	Repairable	Yes

I had suggested a Save button previously, but you could also use a confirmation indicator (maybe a fade in animation with 1 second delay after new total is submitted; numbers could be different color, such as gray/ teal, until they are saved). It's just unsettling now to not have any indication of a successful submit/ update

Please include Host names, description, date/ time, venue, map + address under here. I would delete your current Attendance tabs - they don't seem useful.

Opens an Info window to explain the basics of the calculations with links to more details

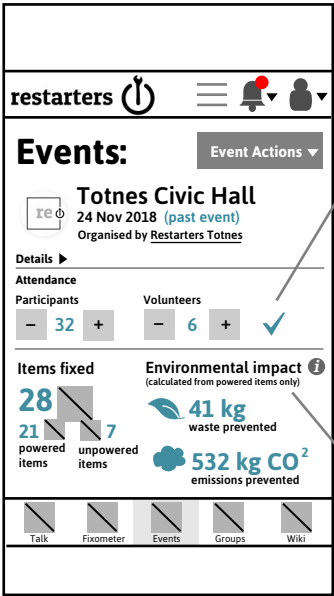
The waste / sofa, emissions/ TV stats make more sense when tied together. TV hours instead of days seems to be clearer too (unless you say "days straight/ straight days"). Finally I changed the wording to be clearer, I think on the equivalents you are trying to make (material vs. emissions waste).

I'm suggesting you not list devices to be recycled or repaired in the future so boldly - at least, I can't see a reason to advertise that. Here their numbers are more subtly stated, and it's made clear that they weren't part of the impact calculation.

Last column could also be labeled "Actions" in the future, when a shop for parts or export to future event features are live:

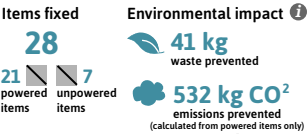
delete button surfaces confirmation dialog

Single Event Page (Past Version) - default view, mobile



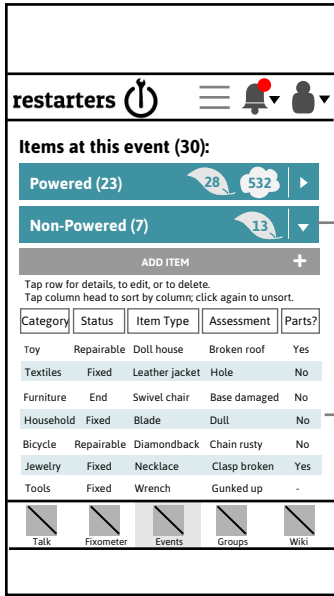
Abbreviated updated numbers confirmation indicator, preferably with light animation

Just playing with arrangement of placeholder icons and numbers - this is up to visual design but icons and nomenclature should be consistent throughout (i.e., "powered" not electric, "items" not devices, "fixed" not repaired for status, etc.):



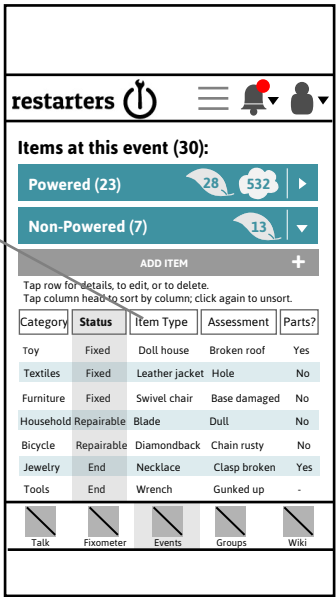
If you are *not* able to calculate waste for non-powered items based on weight, place this line here; otherwise place line here

Scrolled down view:



Each of these is an accordian tab, and the environmental impact icons change as items are added (would be great to add a mini animation to call attention to them changing too, upon new calculation/ item submit).

This table view is a summary, sorted by most recently entered. I played around with different ordering of columns and don't have a strong opinion - I think these should be the max - Parts being the least important but might be nice to have an at a glance on mobile of what is needing parts. Clicking a row opens the full detail view (editable if you have been given privileges); clicking a column head sorts by that column, clicking it again "unsorts" or returns to most recent entry default sorting.



In the revised table for Powered items, this would say Model

Showing sorted by column state

Single Event Page - Add Item view

restarters

Talk

Fixometer

Events

Groups

Wiki

Events:

Totnes Civic Hall, 24 Nov 2018

Event Actions

re

organised by

Restarters Totnes

Details:

James Pickstone, Host. "We're taking Restart on the road to be part of ShareFest Totnes, an event..."

more

Attendance:

Participants

- 32 +

Volunteers

- 6 +

Items repaired

Environmental impact

27

21

powered items

6

unpowered items

39 kg

waste prevented

the same amount of material waste as

2.5 sofas

486 kg CO²

emissions prevented

(calculated from powered items only)

the same amount of emissions as watching

288 hours of TV

Not counting toward this event's environmental impact are 1 device to be recycled, 1 device to be repaired, and 1 misc or non-powered device with no weight estimate.

Items at this event (30):

Powered (23)

Unpowered (7)

A **powered item** is anything connecting to, or containing, a source of power (electrical, battery, solar, etc.)

Click row for details, to edit, or to delete. Click column head to sort by column; click again to unsort.

Add Item

Item

(Item Category*)

(Brand)

(Model)

Weight* 5 kg

Age -

required for environmental impact calculation

use metric system

Images

Click to browse or drag and drop item image

Repair Status

Repairable

(Select Next Steps)

(Select if spare parts are needed)

Assessment

Problem and Solution

Notes (example: repair difficulties, owner's perception of problem, etc.)

(Select source of repair information)

URL for repair information

Interesting case study to share?

Add

1 item

Cancel

Item Category

Brand

Model / Item type

Assessment

Status

Parts Needed?

Mobile

Samsung

Galaxy 8

Dust and dirt accumulation

Fixed

No

Misc

Kenwood

Breadmaker

Doesn't heat up. Still in factory...

Repairable

Yes

Please surface a dialog when the user opens Add Item that announces unpowered item entry, suggestion for wording: "Good news! You can now add unpowered items (bikes, clothes, and more), under the Unpowered tab." Include a don't show me this again checkbox.

From the user research and threads, these appear to be the fields with the most questions, but you might consider providing help windows for more or all (or one item entry help window/ system)

If Item Category = Miscellaneous, change "Model" to "Item Type"

Toggles section open and closed, paired with a keyboard shortcut for keyboard entry support. If data entered, surfaces a confirmation dialog before closing.

Single Event Page - Edit non-powered Item view

restarters

Talk

Fixometer

Events

Groups

Wiki

Events:

Totnes Civic Hall, 24 Nov 2018

Event Actions

re

organised by
Restarters Totnes

Details:

James Pickstone, Host. "We're taking Restart on the road to be part of ShareFest Totnes, an event..."

more

Attendance:

Participants

- 32 +

Volunteers

- 6 +

Items repaired

Environmental impact

27

21 powered items

6 unpowered items

39 kg waste prevented

the same amount of material waste as 2.5 sofas

486 kg CO² emissions prevented

(calculated from powered items only)

the same amount of emissions as watching 288 hours of TV

Not counting toward this event's environmental impact are 1 device to be recycled, 1 device to be repaired, and 1 misc or non-powered device with no weight estimate.

Items at this event (30):

Powered (23)

28 532

Unpowered (7)

13

An unpowered item is anything that doesn't have or require a power source.

Click row for details, to edit, or to delete. Click column head to sort by column; click again to unsort.

Add Item +

Item Category	Model / Item Type	Assessment	Status	Parts Needed?
Toy	Doll house	Broken roof	Fixed	No
Textiles	Leather jacket	Hole	Repairable	Yes

Item

Clothes and textiles

Leather jacket

Weight* kg

Age yrs

☒ use metric system

Images

Repair Status

Repairable

Next steps?

Spare parts needed?

Assessment

Problem and Solution

Hole

Notes

Source of repair information:

URL for repair information

Interesting case study to share?

Clicking row expands—and contracts section (or option to have an edit icon next to delete button, under an Actions column)

Could highlight until filled to reinforce it's encouraged (if not required)

Option to do labels like this or as you have them now

Help windows optional

restarters

Items at this event (30):

Powered (23)

28 532

Non-Powered (7)

13

Add Item +

Tap row for details or to edit.

Tap column head to sort by column; click again to unsort.

Category	Item Type	Status	Assessment	Parts?
Toy	Doll house	Repairable	Broken roof	Yes
Textiles	Leather jacket	Repairable	Hole	Yes

Item

Item Category

Textiles and clothes

Item Type

Leather jacket

Weight*

kg

required for environmental impact calculation

Age

ysrs - approximate, if known

Image

Add...

Repair

Status

Repairable

Next Steps

(select)

Spare parts needed?

(select)

Assessment

Problem and Solution

Notes

(example: repair difficulties, owner's perception of problem, etc.)

Source of Information

(select)

URL

☐ Interesting case study to share?

Save

Cancel

Add Item looks similar to above, but expands down from Add Item button, as on desktop.

Fixometer

restarters

Fixometer

Add Data

Our Global Impact

Latest data: Benin Fixers prevented 22 kg of waste!

Restarters around the world are having a huge impact! Read more about how we assess our impact on the environment.

20,395 kg

of waste prevented

the same amount of material waste as in

869 sofas

312,518 CO²

emissions prevented

(calculated from powered items only)

the same amount of emissions as watching

34,219 hours of TV

16,459 participants

29,535 volunteer hours

12,845 powered items

39 unpowered items

Talk

Events

Groups

Wiki

restarters

Fixometer

Add Data

Our Global Impact

Latest data: Benin Fixers prevented 22 kg of waste!

Restarters around the world are having a huge impact! Read more about how we assess our impact on the environment.

20,395 kg

of waste prevented

the same amount of material waste as in

869 sofas

312,518 CO²

emissions prevented

(calculated from powered items only)

the same amount of emissions as watching

34,219 hours of TV

16,459 participants

29,535 volunteer hours

12,845 powered items

39 unpowered items

Restart Records

Browse or search our global database of repairs.

Search and filter

3 filters applied:

Textiles

Jacket

Feb 1 2019 - Jan 1 2020

Tap row for details, to edit, or to delete.

Tap column head to sort by column; click again to unsort.

Category	Group	Status	Date
Textiles	Leicester Fixers	Fixed	13 Mar 2019
Textiles	Rosie Restarters	Fixed	25 Sept 2019
Textiles	GroupName	Repairable	13 Mar 2019
Textiles	GroupName	End	25 Sept 2019

Item

Item Category

Textiles

Item Type

Jacket

Weight

3 kg

part of environmental impact calculation

Age

18 yrs

Image

Repair

Status

Repairable

Next Steps

Patch

Spare parts needed?

Yes - from 3rd party

Assessment

Repair diagnosis

Hole

Owner perception of Problem

same

Repair solution

Leather patch and goo glue

Source of Information

From 3rd party

URL

leatherpros.com

Interesting case study

Save

Cancel

Desktop

restarters

Fixometer

Add Data

Our Global Impact

Latest data: Benin Fixers prevented 22 kg of waste!

Restarters around the world are having a huge impact! Read more about how we assess our impact on the environment.

20,395 kg

of waste prevented

the same amount of material waste as in

869 sofas

312,518 CO²

emissions prevented

(calculated from powered items only)

the same amount of emissions as watching

34,219 hours of TV

16,459 participants

29,535 volunteer hours

12,845 powered items

39 unpowered items

Restart Records

Browse or search our global database of repairs.

Search and filter:

Item & Repair Info

Powered

Unpowered

Category:

Textiles

Model or Item Type:

Jacket

Repair Status:

Fixed

Search assessment comments:

glue

Interesting case study

Event Info

Search all items

Powered (23)

19,489

312,518

Unpowered (7)

1,284

An unpowered item is anything that doesn't have or require a power source.

Click row for details. Click a column head to sort by that column - click again to reverse sort order.

Category	Item Type	Assessment	Group	Status	Date
Textiles	Jacket	Hole	Leicester Fixers	Fixed	4 Sept 2019
Textiles	Jacket	Tear	Rosie Restarters	Fixed	28 Mar 2020

Would be awesome if these could visibly update in real time (or real “fake” time) :)

Suggest making this single-select (radio button). If multiple-select, make category contextual to both Powered and Unpowered (user is required to choose from separate Powered and Unpowered category menus)

OK to keep directional sorting of columns as you have it - maybe just don't reveal carrot until sort is selected, and highlight the whole column visually if possible (not just the name of the column)